

# Why Operational AI Fails to Deliver Impact



## What Manufacturing Leaders Fix First

Manufacturers are investing in predictive maintenance, forecasting, and quality analytics. Yet many initiatives stall before they reach sustained production impact. The problem isn't ambition or tooling; it's whether plant, ERP, and operational data can be trusted at scale.



## What Manufacturing Leaders Are Seeing

Across multi-plant and connected manufacturing environments, similar patterns emerge:

- Predictive maintenance models that fail to prevent unplanned downtime
- Demand forecasts that fluctuate and disrupt production planning
- Quality analytics that cannot consistently detect root causes
- Dashboards and KPIs that leadership teams question rather than act on

## The Hidden Cost of Unstable Operational Data

When data foundations are unreliable:



**Downtime increases** because machine and sensor data cannot be reconciled



Production schedules shift due to **inconsistent forecasting** inputs



**Quality defects** go undetected or are detected too late



Operational and **financial systems** fail to align, obscuring true performance

At this stage, AI is no longer a technology initiative; it becomes an operational risk decision.

## The Shift High-Performing Manufacturers Are Making

Rather than launching additional pilots or expanding toolsets, leading manufacturers are stabilizing operational data foundations first. This means:



Reconciled plant, ERP, MES, and supply chain data



Clean, governed data pipelines across facilities



Quality controls embedded by design



AI models deployed only after production data reliability is established



## The Data Pods Approach



**Stabilize operational data before scaling AI**



**Align plant and enterprise systems into governed pipelines**



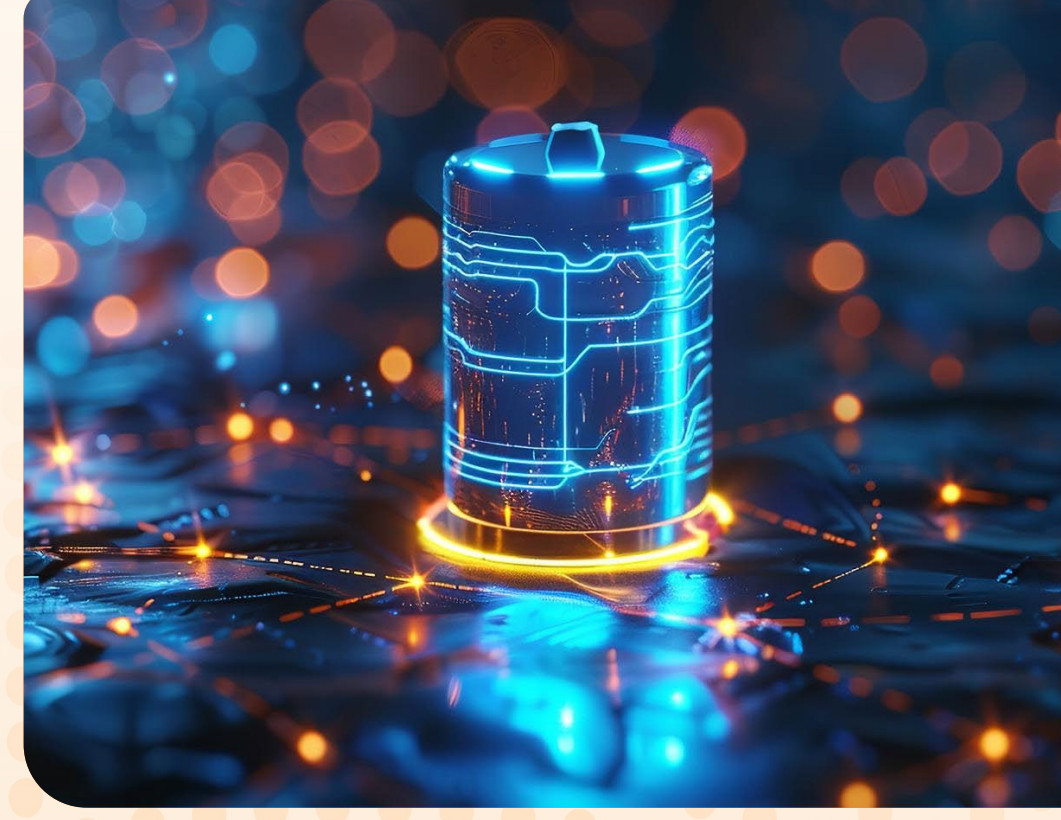
**Deliver AI in production; not pilots**



**Tie every use case to measurable operational outcomes**



**Complete in 90 days with clear ownership**



## Why Manufacturing Leaders Choose Netsmartz



**26+ years** of enterprise delivery experience



**Deep engineering expertise** across manufacturing, ERP, and operational systems



**1,500+** global engineers



**Outcome-driven engagement model** focused on measurable operational impact

## The Right Next Step

If operational AI is on your roadmap, the fastest way to reduce risk is to assess data readiness first.

A **Data Readiness Assessment** helps manufacturing leaders:



Identify where plant and enterprise data pipelines break down



Determine which AI use cases are realistically production-ready



Evaluate whether a 90-day stabilization sprint fits operational priorities

Start with a 20-Minute Data Readiness Assessment