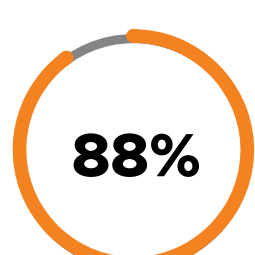


AI Pod Partnership: From AI Strategy to Production in ≤45 Days

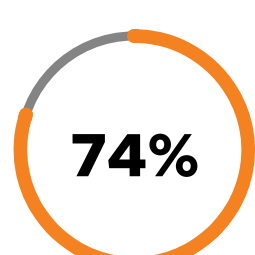
A trusted AI execution engine for enterprise advisors.



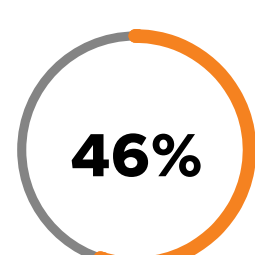
The AI Execution Gap



Organizations use AI in at least one business function.



Still struggle to achieve tangible value from their AI initiatives.

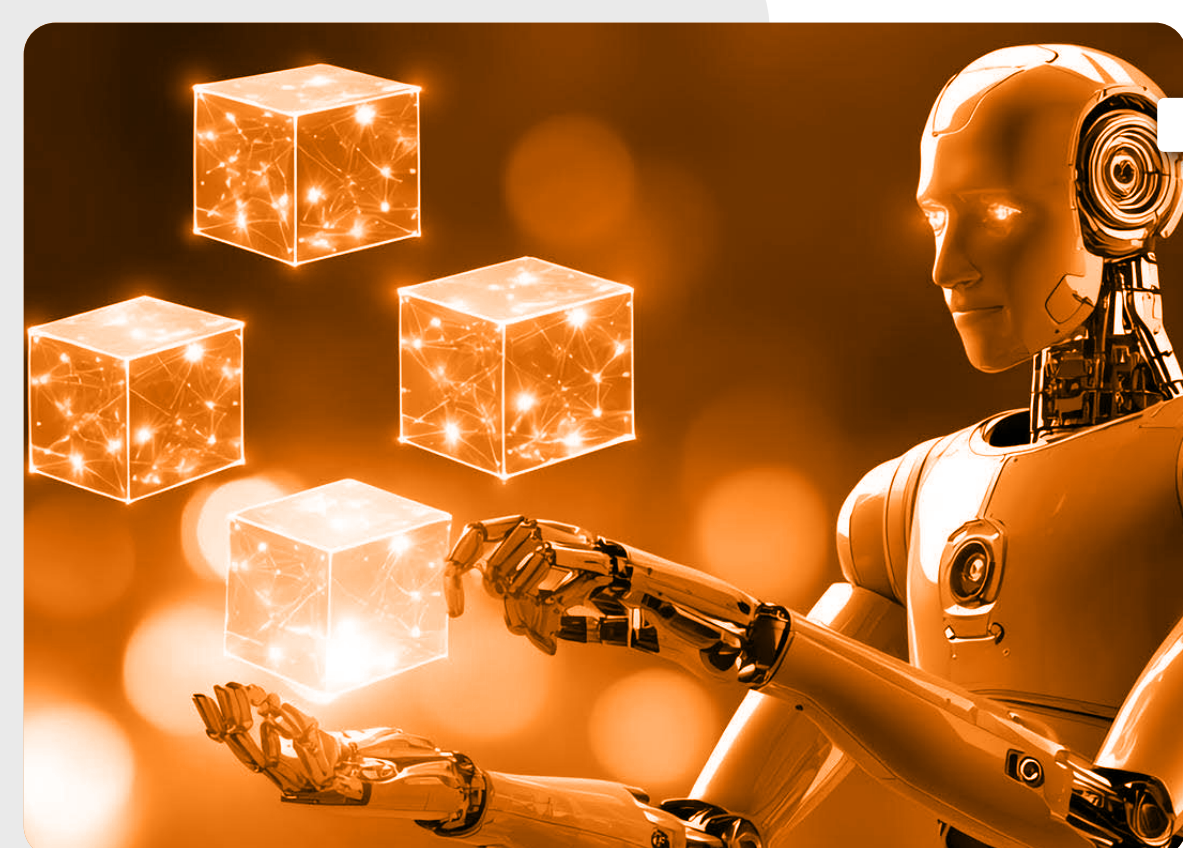


AI PoC projects get abandoned before they reach production.

The bottleneck isn't a lack of advisory; it's viable execution.

The Problem with Traditional AI Execution Models

| AI Execution Model | Key Drawbacks |
|-------------------------------|--|
| In-House Hiring | Costly and time-intensive process, which can stall AI initiatives and damage your reputation. |
| Large System Integrators (SI) | Engagement timelines can stretch 9–12 months, ultimately losing executive velocity and confidence. |
| Freelancers/Boutiques | Individual contributors lack accountability and cross-functional discipline for AI execution |



The Solution? The AI Pod Model by Netsmartz

Netsmartz gives you the AI Pod engagement model, a cross-functional AI delivery unit designed to launch production-ready AI within just 45 days. What a standard pod consists of:

- AI/ML Engineer
- Data Engineer
- AI Product Owner
- Full-stack/Integration Engineer
- Domain SME (Healthcare, Manufacturing)

No compliance risks. No hiring delays. No operational overhead.

Introducing the AI Pod Partnership

Advisors influence direction; Netsmartz ensures execution. Our AI Pod Partnership is a trusted AI execution engine for AI advisors, enabling them to convert influence into measurable outcomes. It is a strategic partnership designed for fractional CTOs, CIOs, CAIOs, & AI advisors.

You stay the trusted strategist; we become your accountable delivery arm.

The Core Deliverables of the Partnership

| | | | | |
|--|------------------------------|-----------------------------|--------------------------------|-----------------------------------|
| 10% | ≤45 days | \$15,000+ | 20–30% | 100% |
| Ongoing Margin on Every Deal You Influence | To First Production Use Case | Monthly Cost Savings Target | Measurable Productivity Uplift | Contractual Accountability (Ours) |



Why Partner with Netsmartz?

- 26+ Years of Enterprise Technology Delivery
- 100% Production-Ready AI Deployments
- 3x Expansion Potential Per Client
- 45-Day Outcome-Linked AI Delivery Model
- 10+ Cutting-Edge Global Campuses

Ready to Turn Your Influence into Measurable Outcomes?

Let's begin with a short partnership fit call to identify the AI applications that will deliver the fastest strategic return for your clients. No operational or delivery risk.

Book a Free qualification discussion now